

# BIOLINK

## From 3D printer to a Biological System

Héctor Sangüesa Ferrer, Max Van't Hof, Stefan Marsden, Tudor Vlas, Samantha Basalo Vazquez, Michelle Post, Liana Uilecan, Marit van der Does & Anne Rodenburg



### INTRODUCTION

- **Biofilms** are communities of bacteria that live together on a surface, protected by an external layer.
- Bacteria inside the biofilm are far more **resistant** to antibiotics and industrial removal products.
- A better understanding of biofilms could accelerate drug **testing and research**.
- By engineering structured **artificial biofilms** testing could be improved, thereby saving time, money and lives.

### HOW CAN WE MAKE RELIABLE AND REPRODUCIBLE BIOFILMS FOR TESTING?

### HUMAN PRACTICES AND OUTREACH

#### Outreach

- **Involving students:** business case on biofilm innovation.
- Enriching interactions with society and academia.
- Appearances on radio and **national news**.
- We received K'NEX donations.

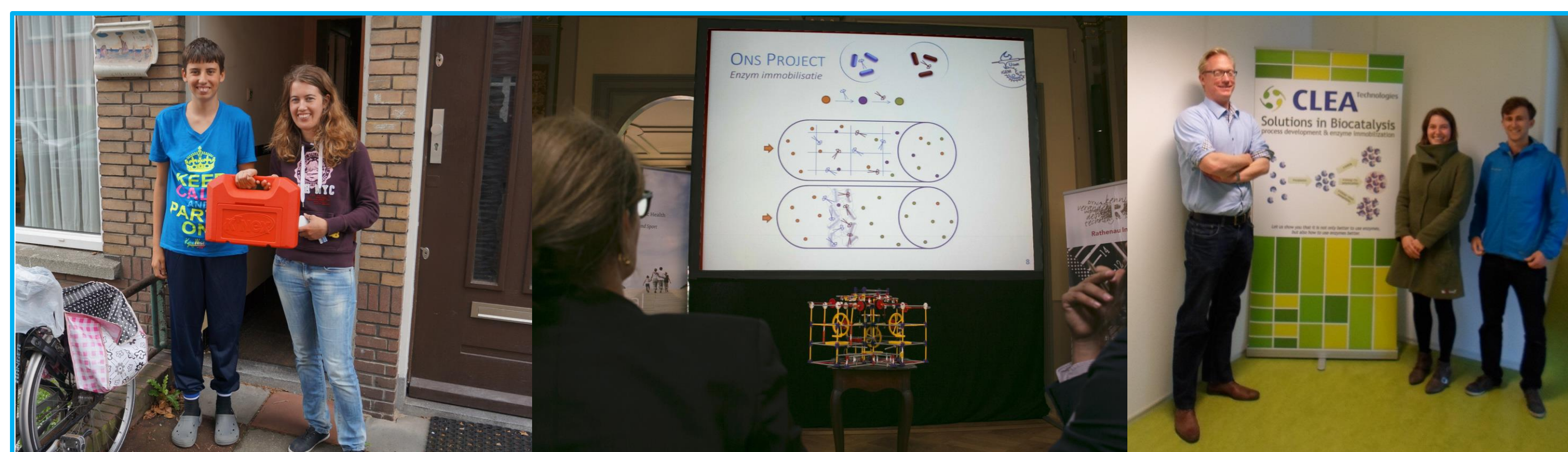
#### Societal impact

- Biolink may improve drug safety and understanding of biofilms.
- We analyzed how our project could be marketed by creating a **business plan**.
- We designed a tool that helps evaluate goals of a project.
- Ethics and safety!

#### Experts opinion

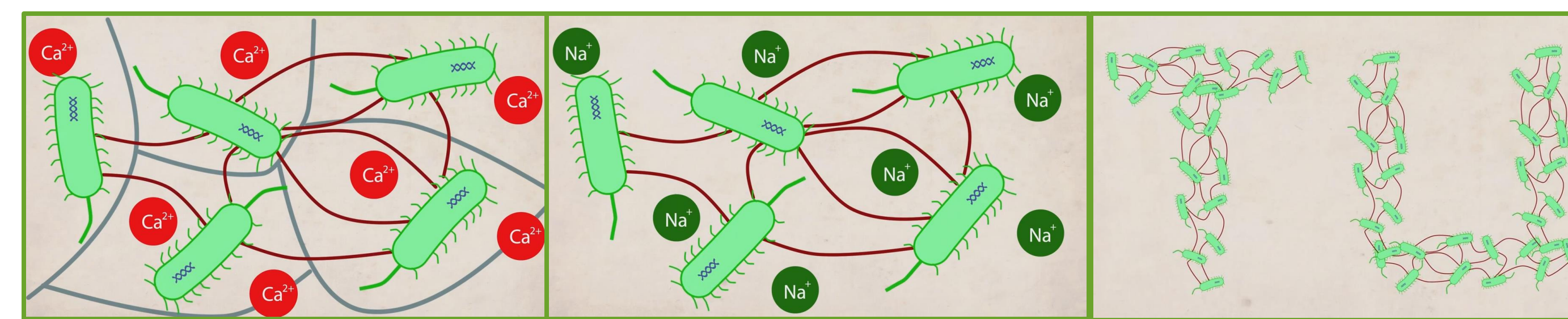
We received input and feedback from experts in the field!

- 3D printing companies
- Oral care
- Biofilm research
- Testing
- Industrial removal



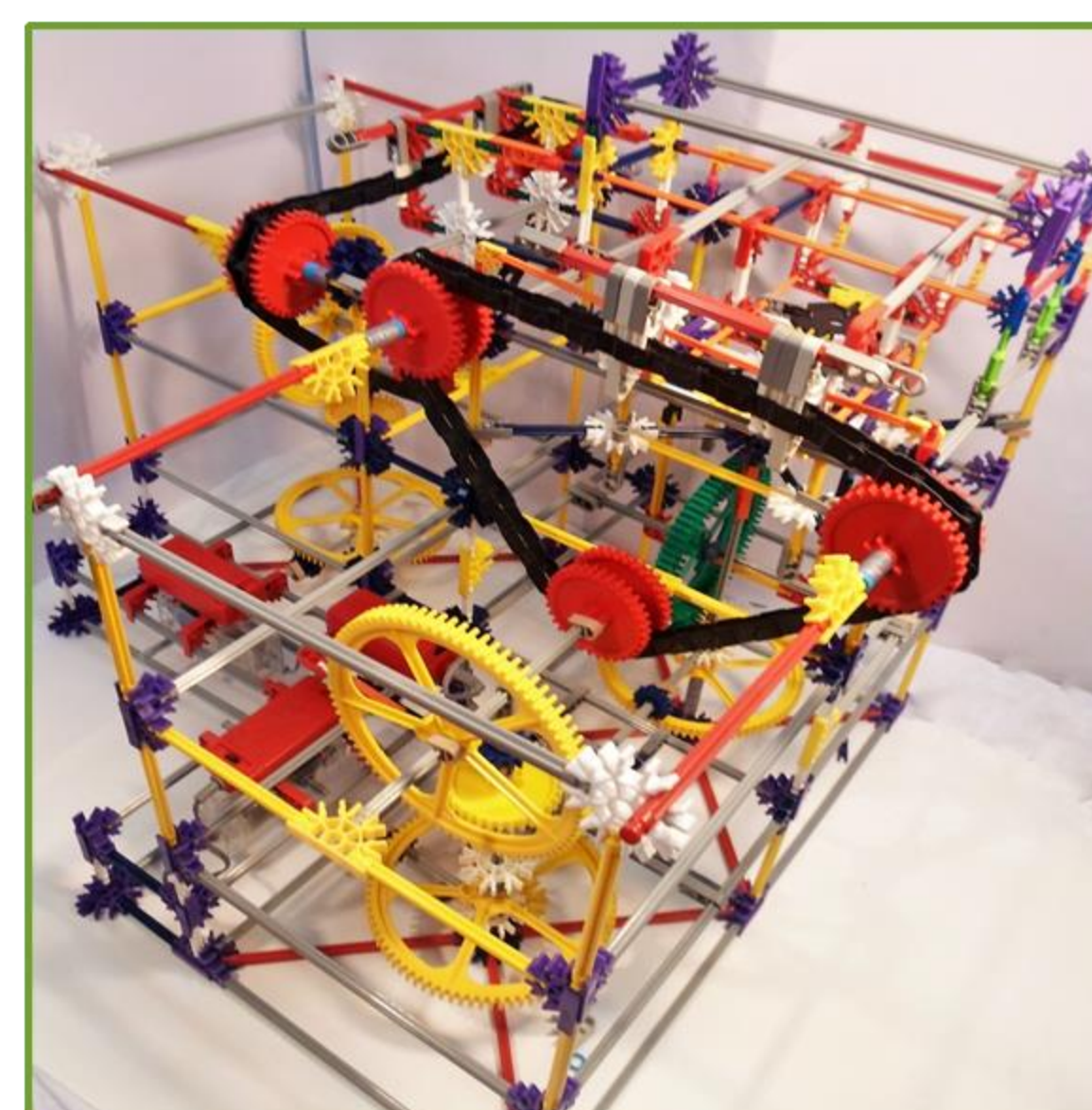
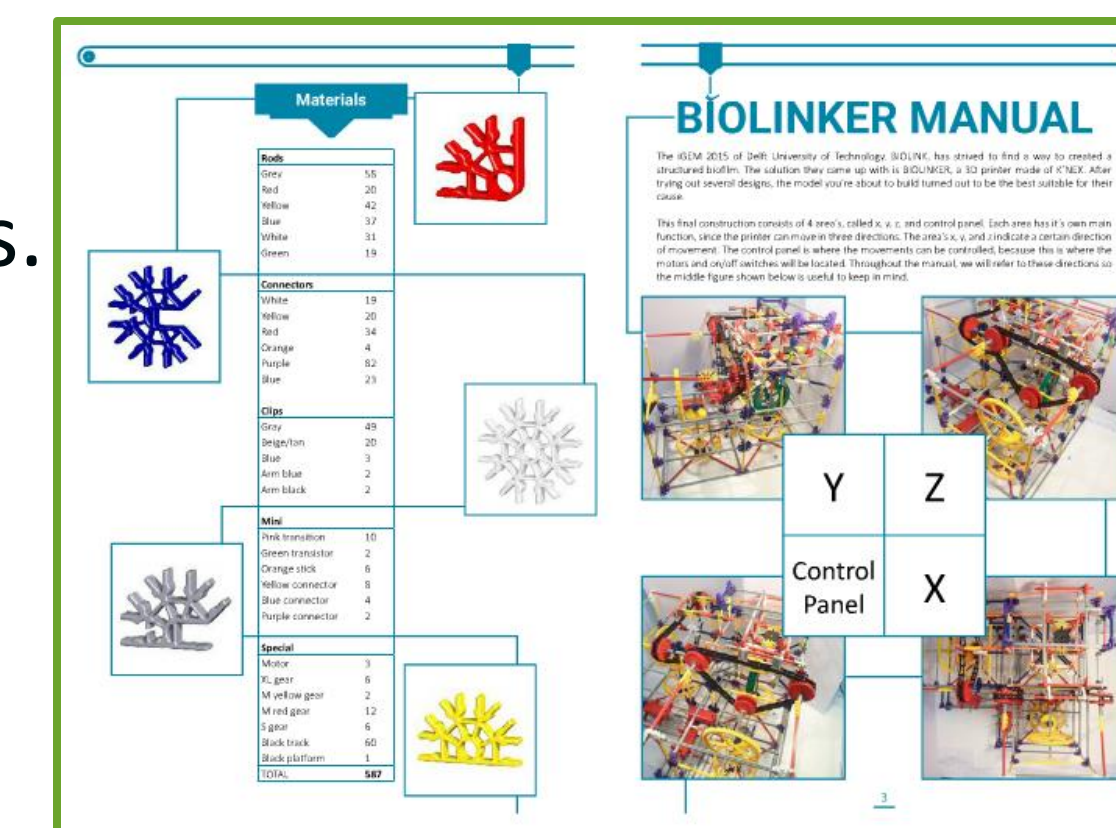
### BIOLINKER

- Cells are printed within a **hydrogel scaffold** made of alginate and calcium chloride: our **bio-ink**!
- Induction with rhamnose enables the connection of neighboring cells by expressing **curli proteins** (CsgA) required for biofilm formation.
- The gel scaffold is dissolved with sodium chloride. The cells remain **connected in the printed disposition** due to the biofilm connections.



#### Cheap and safe

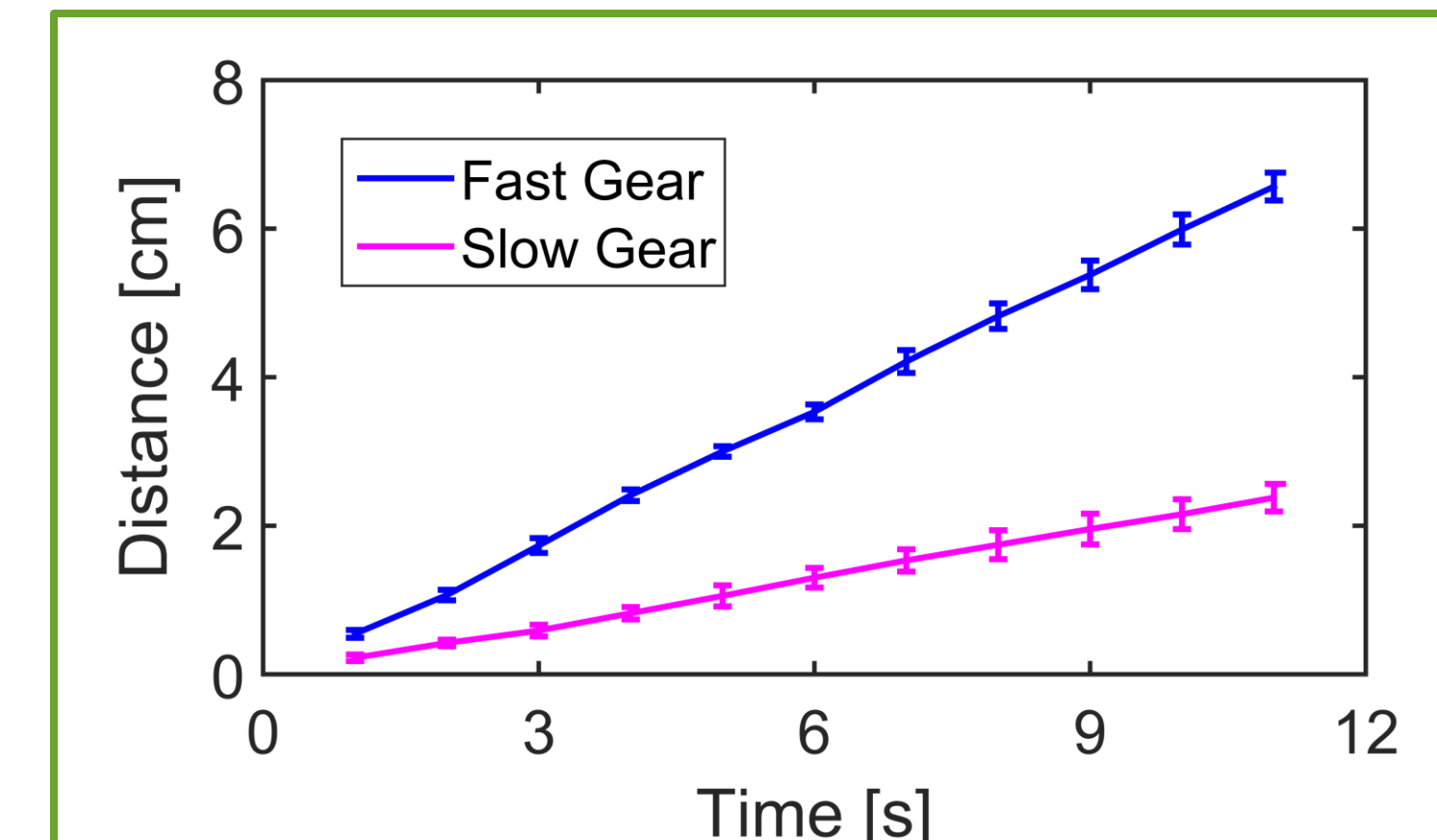
- Our printer is made of K'NEX pieces.
- Our printer is **safe** to use!
- Total price of Biolinker: **541 €**
- Our printer is a **DIY** product!



Check out our printer online!

#### Adaptable

- We are able to print **different types** of bacteria (collaboration Groningen).
- The printer is equipped with two gears.

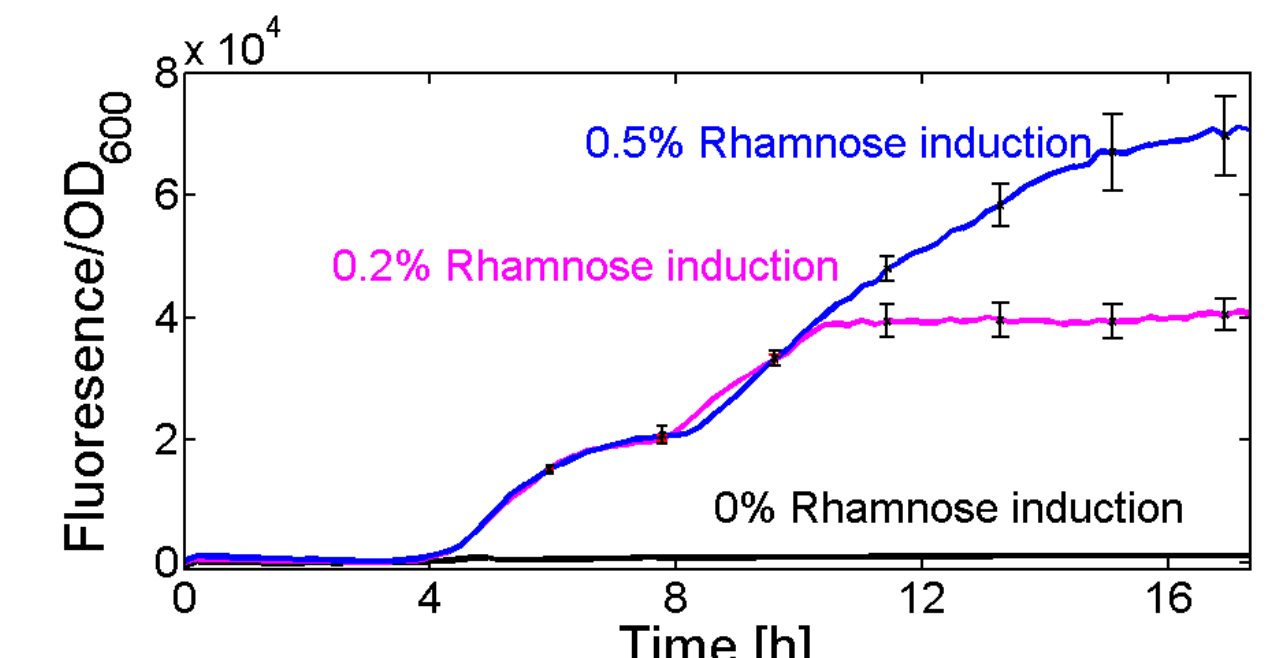
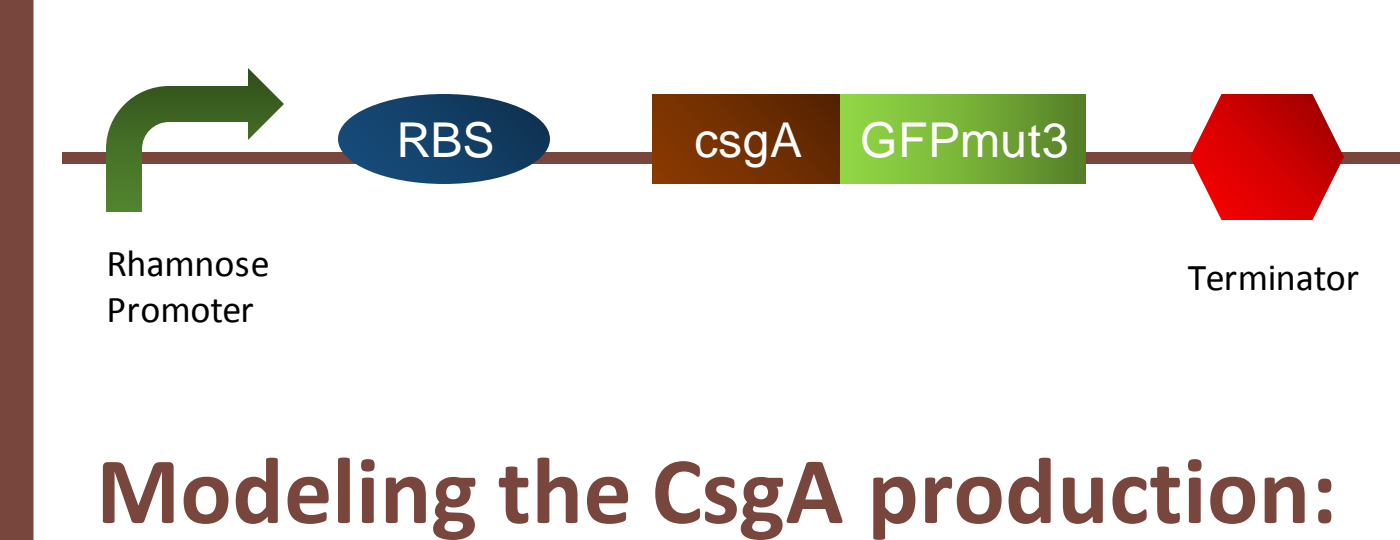


#### Accurate

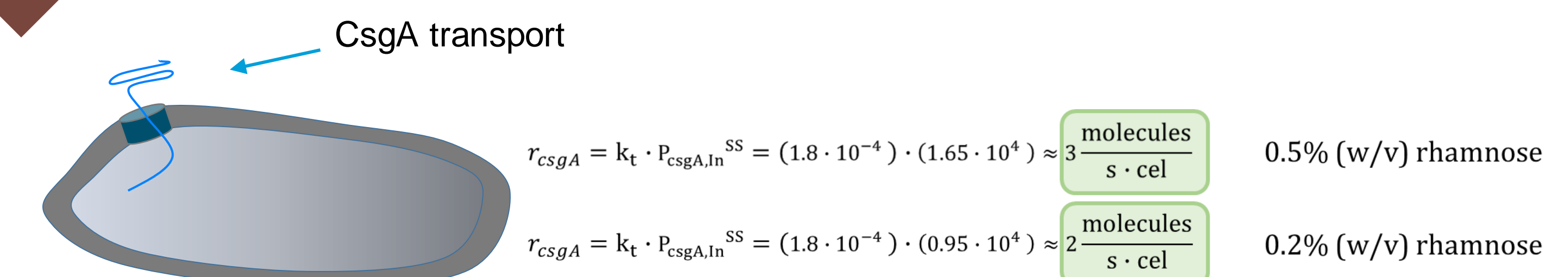
- Both gears print with **consistent velocity**.

### RESULTS

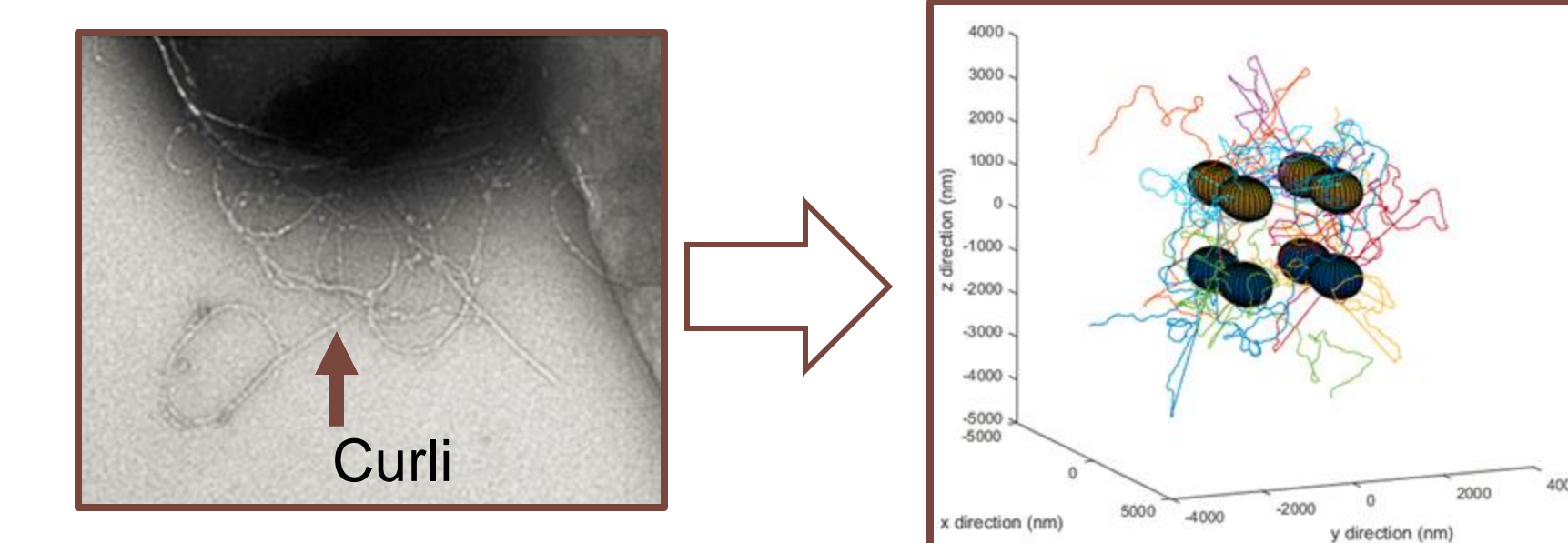
#### Inducible CsgA production



#### Modeling the CsgA production:

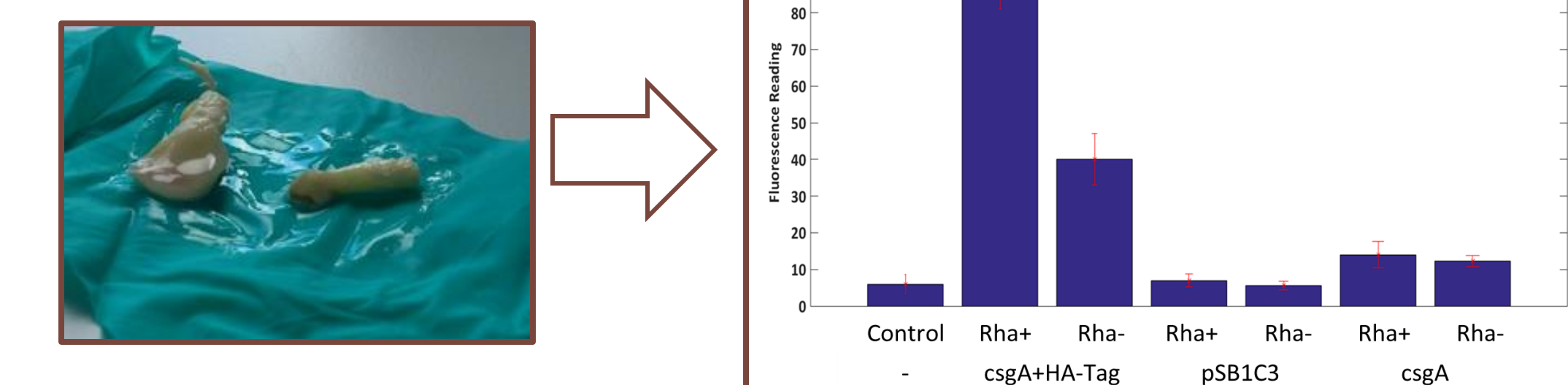


#### Curli characterization: TEM



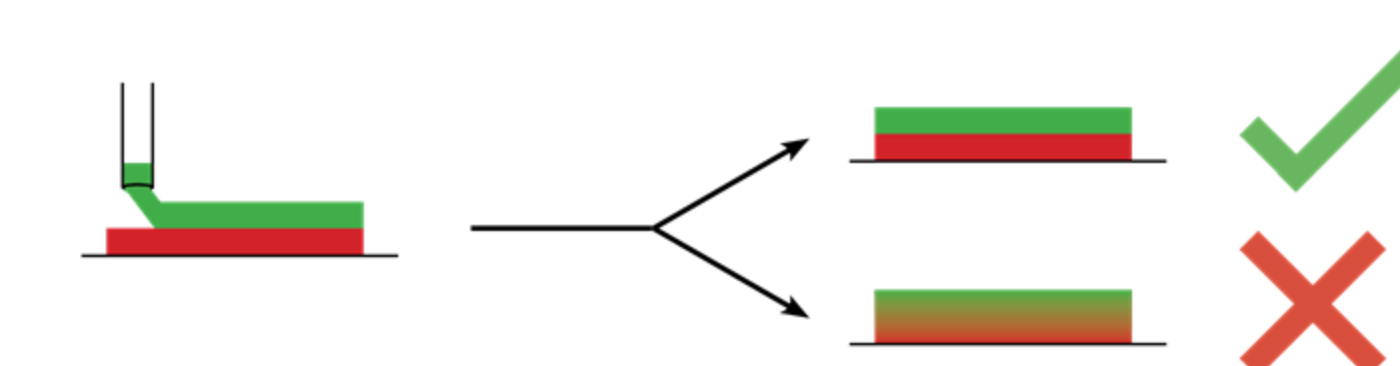
The persistence length was estimated from the TEM images and used as input for our model.

#### Affinity tag

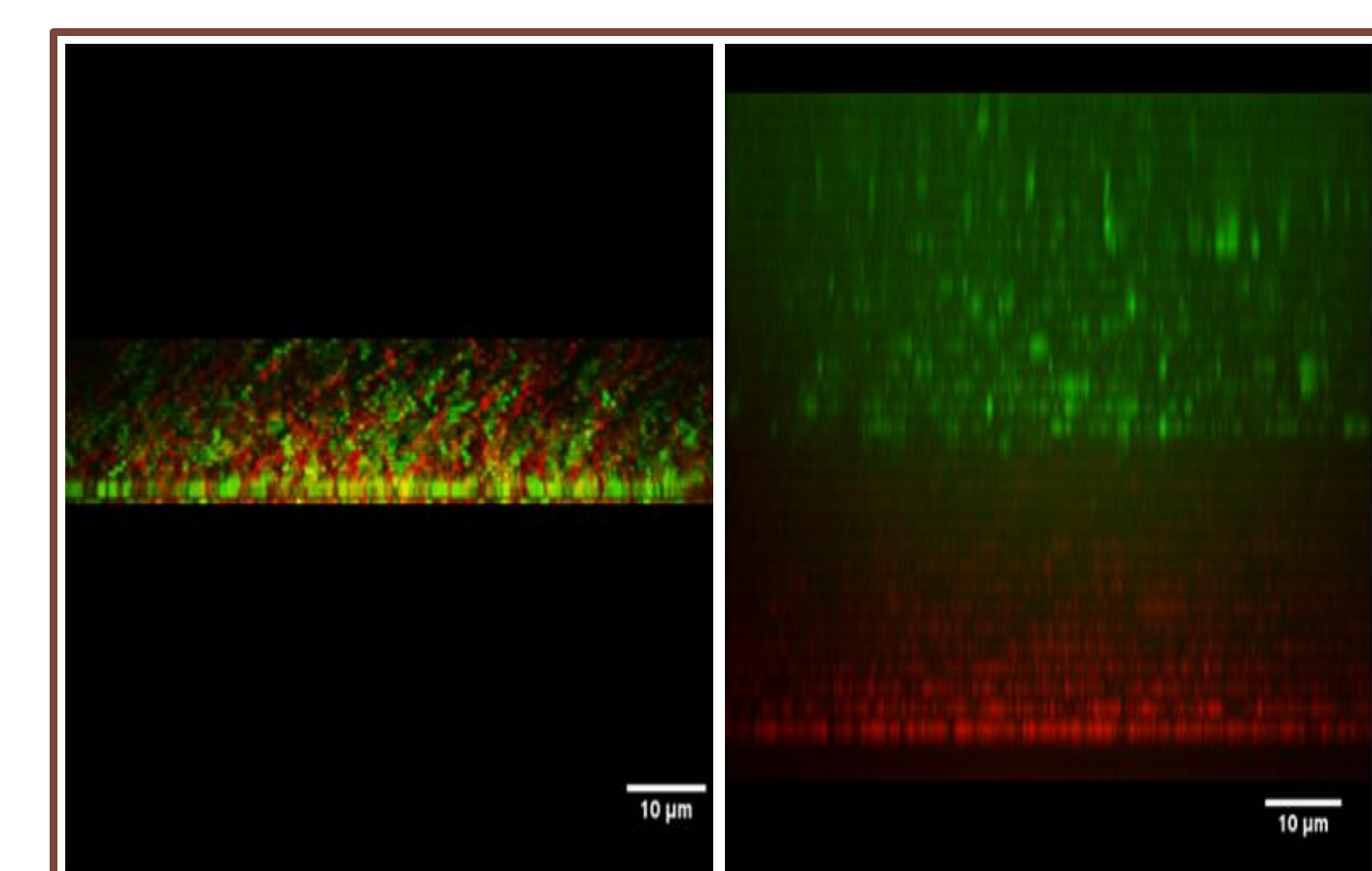


The hydroxyapatite-tag results in increased adhesion to the teeth.

#### Biofilm 3D printing



After printing, the layered cells maintain their **defined structure** thanks to the bio-ink!



- alginate/ CaCl2 + alginate/ CaCl2

### CONCLUSIONS

- We can control the **CsgA production** and therefore the **biofilm strength**.
- We incorporated affinity tags that show **increased adhesion**.
- We can print bacteria in **layers**.
- The **Biolinker** is a tool that contributes to the production of reliable and reproducible biofilms.

### REFERENCES

- Roy, M. D., Stanley, S. K., Amis, E. J., & Becker, M. L. (2008). Identification of a Highly Specific Hydroxyapatite-binding Peptide using Phage Display. *Advanced Materials*, 20(10), 1830-1836.
- Chen, A. Y., Deng, Z., Billings, A. N., Seker, U. O., Lu, M. Y., Clorik, R. J., ... & Lu, T. K. (2014). Synthesis and patterning of tunable multiscale materials with engineered cells. *Nature materials*, 13(5), 515-523.
- Barnhart, M. M., & Chapman, M. R. (2006). Curli biogenesis and function. *Annual review of microbiology*, 60, 131.
- Rowley, J. A., Meddins, G., & Mooney, D. J. (1999). Alginate hydrogels as synthetic extracellular matrix materials. *Biomaterials*, 20(1), 45-53.
- Nguyen, P. O., Bolyarski, Z., Tay, P. K., Joshi, N. S., (2014). Programmable biofilm-based materials from engineered curli nanofibers. *Nat Commun*, 17(5), 4945.
- Duholm, M. S., Nelsen, S. B., Hein, K. L., Nissen, P., Chapman, M., Christiansen, G., Nelsen, P. H., Otzen, D. E. (2011). Fibrillation of the major curli subunit CsgA under a wide range of conditions implies a robust design of aggregation. *Biochemistry*, 45(39), 8291-80.
- Wiegner, A., Sun, T., & Allenbuchner, J. (2008). Optimization of an E. coli L-rhamnose-inducible expression vector: test of various genetic module combinations. *BMC biotechnology*, 8(1), 2.

### ACKNOWLEDGEMENTS

